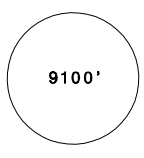
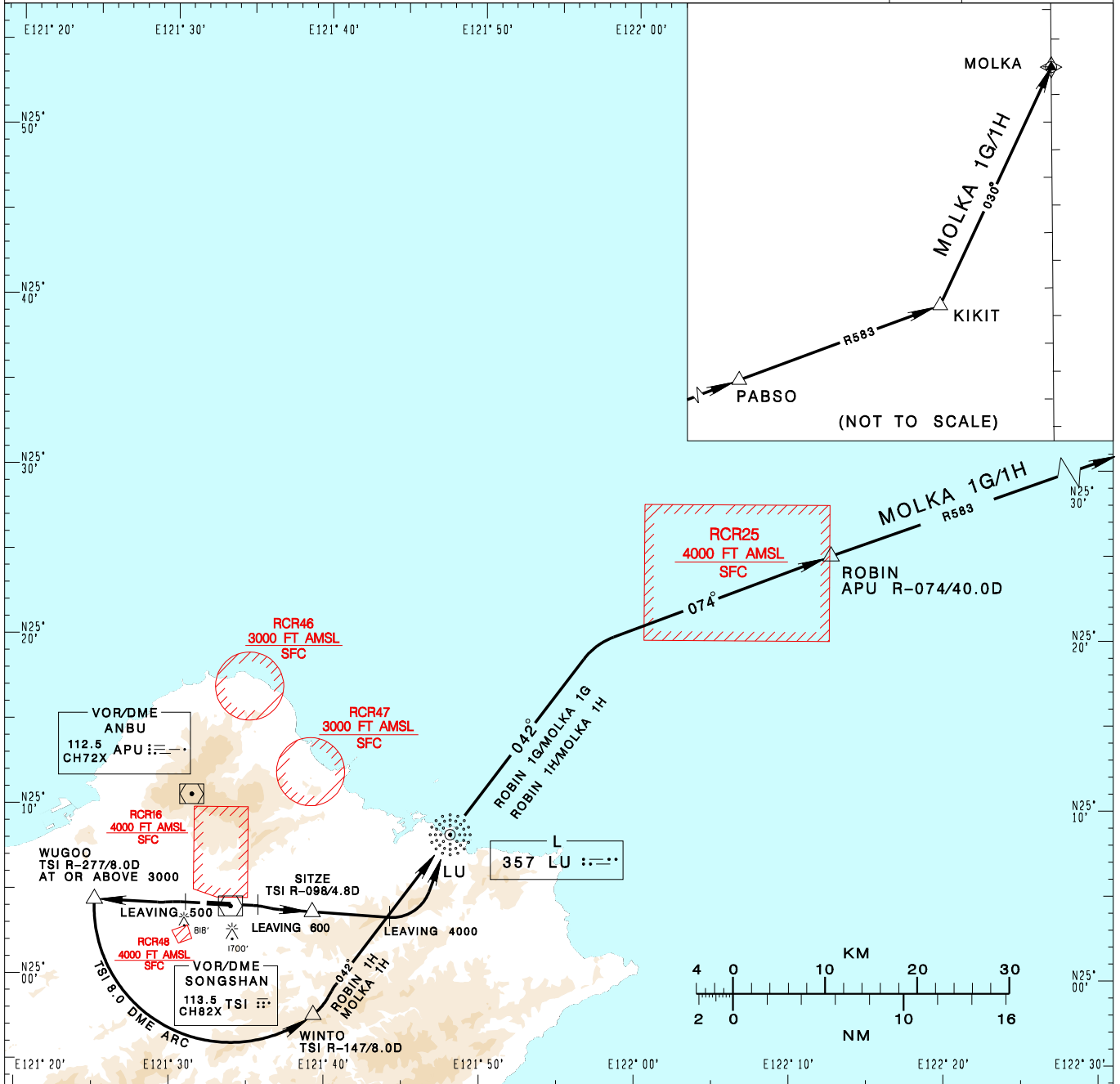


臺北/松山機場
TAIPEI/SONGSHAN AD

MOLKA 1G(RWY10)/ROBIN 1G(RWY10)
MOLKA 1H(RWY28)/ROBIN 1H(RWY28)

RCSS SID
1G(RWY10)
1H(RWY28)

TAIPEI APP 119.7 119.6 125.1			SONGSHAN TWR 118.1			ATIS 127.4 341			VAR 5° W-2022	 <p>9100'</p> <p>MSA ARP 25NM</p>
Apt Elev: 18'			Trans Level: FL130			Trans Alt: 11,000'				
BEARINGS ARE MAGNETIC; DISTANCES ARE NAUTICAL MILES; ELEVATIONS, HEIGHTS IN FEET										



MOLKA ONE GOLF DEPARTURE
Climb on RWY HDG until 600ft, then track TSI R-098 to SITZE, continue TSI R-098 until 4000ft, then turn left direct to LU, then track LU 042BRG to intercept APU R-074 to ROBIN, join R583 to KIKIT, then direct to MOLKA.

MOLKA ONE HOTEL DEPARTURE
Climb on RWY HDG until 500ft, then track TSI R-277 to WUGOO, cross WUGOO at or above 3000ft, then turn left join TSI 8.0 DME arc to WINTO, then track LU 042BRG to LU, then continue LU 042BRG to intercept APU R-074 to ROBIN, join R583 to KIKIT, then direct to MOLKA.

ROBIN ONE GOLF DEPARTURE
Climb on RWY HDG until 600ft, then track TSI R-098 to SITZE, continue TSI R-098 until 4000ft, then turn left direct to LU, then track LU 042BRG to intercept APU R-074 to ROBIN.

ROBIN ONE HOTEL DEPARTURE
Climb on RWY HDG until 500ft, then track TSI R-277 to WUGOO, cross WUGOO at or above 3000ft, then turn left join TSI 8.0 DME arc to WINTO, then track LU 042BRG to LU, then continue LU 042BRG to intercept APU R-074 to ROBIN.

- NOTE**
1. ROBIN 1G:
Minimum climb gradient required: 7.0%(426ft/NM) until 4000ft.
 2. ROBIN 1H:
Minimum climb gradient required: 7.0%(426ft/NM) until WUGOO.
 3. MOLKA 1G:
Minimum climb gradient required: 7.0%(426ft/NM) until 4000ft.
 4. MOLKA 1H:
Minimum climb gradient required: 7.0%(426ft/NM) until WUGOO.
 5. ATS surveillance required.
 6. Caution high terrain around airport.
 7. A 1700ft-high BLDG at 2.1NM south of THR 28.
 8. A 818ft-high BLDG at 2 NM SW of THR 10.

CHANGES: NEW CHART